

Zusatzstimme

Fröhliche Weihnacht mit der Posaune

(mit dem Bariton, dem Euphonium)

2. Stimme der Duette
transponiert für das Zusammenspiel mit dem Horn

Der Hornspieler spielt die 1. Stimme der Duette aus dem gedruckten Notenheft, der Posaunenspieler spielt als 2. Stimme diese Zusatzstimme.

Rapp-Verlag

Hebelweg 4, D-79410 Badenweiler
Internet: www.rapp-verlag.de E-Mail: info@rapp-verlag.de
Tel. 07632/828283 Fax 07632/828284

Kopieren erlaubt! Der Verlag erklärt sich damit einverstanden, dass diese Noten zu nichtgewerblichen Zwecken, z.B. zur Weitergabe an Musikschüler, kopiert werden dürfen.

Freude, schöner Götterfunken

Two staves of musical notation in bass clef, 4/4 time, and B-flat major. The first staff begins with a dynamic marking of *mf*. The melody consists of quarter and eighth notes, with a final half note on the second staff.

Jingle Bells

Three staves of musical notation in bass clef, 4/4 time, and B-flat major. The first staff begins with a dynamic marking of *mp*. The melody features a mix of quarter, eighth, and sixteenth notes, with some notes marked with a fermata.

Stille, stille, kein Geräusch gemacht!

Three staves of musical notation in bass clef, 4/4 time, and B-flat major. The first staff begins with a dynamic marking of *p*. The melody is composed of quarter and eighth notes, ending with a half note on the third staff.

Morgen kommt der Weihnachtsmann

Musical score for 'Morgen kommt der Weihnachtsmann' in bass clef, 4/4 time, B-flat major. The score consists of three staves. The first staff begins with a *mf* dynamic marking. The second staff continues the melody. The third staff ends with a *f* dynamic marking.

Lieber, guter Nikolas

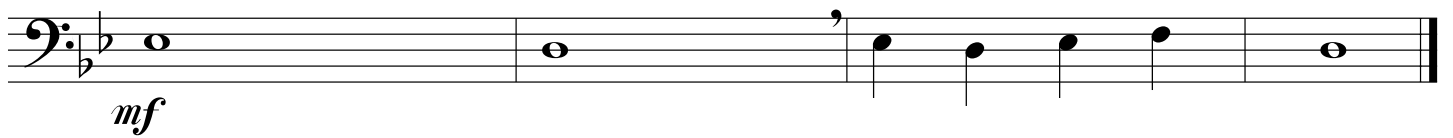
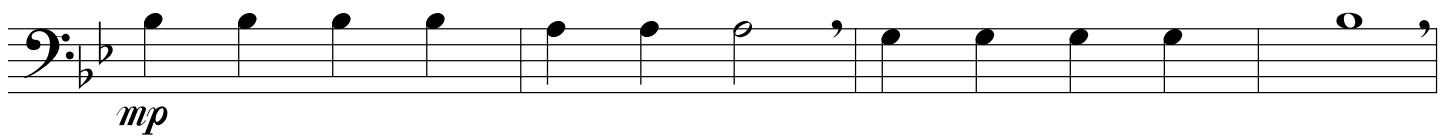
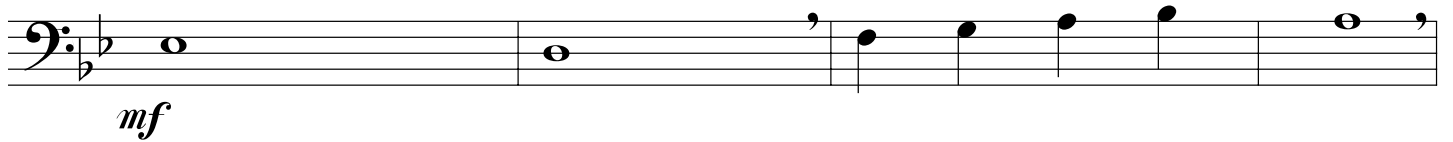
Musical score for 'Lieber, guter Nikolas' in bass clef, 4/4 time, B-flat major. The score consists of two staves. The first staff contains four measures of rests, followed by a sixteenth rest and a quarter note G. The second staff continues the melody. A *mf* dynamic marking is placed below the first staff.

Joseph, lieber Joseph mein

Musical score for 'Joseph, lieber Joseph mein' in bass clef, 3/4 time, B-flat major. The score consists of two staves. The first staff begins with a *mf* dynamic marking. The second staff continues the melody.

Guter, alter Nikolaus

(Jolly Old Saint Nicholas)



Nun singet und seid froh

(In dulci jubilo)



Leise rieselt der Schnee

Two staves of musical notation in bass clef, 3/4 time, and B-flat major. The first staff begins with a piano (*p*) dynamic marking. The melody consists of quarter and half notes, ending with a double bar line.

Lobt Gott, ihr Christen, alle gleich

Three staves of musical notation in bass clef, 4/4 time, and B-flat major. The first staff begins with a forte (*f*) dynamic marking. The melody is composed of quarter and eighth notes, concluding with a double bar line.

Kling, Glöckchen, klingelingeling

Three staves of musical notation in bass clef, common time (C), and B-flat major. The first staff starts with a mezzo-forte (*mf*) dynamic, followed by a mezzo-piano (*mp*) dynamic. The second and third staves continue the melody with various note values and dynamics, including a crescendo leading to *mf* in the final staff, and ending with a double bar line.

Was soll das bedeuten?

Musical score for the piece "Was soll das bedeuten?". It consists of three staves of music in bass clef, 3/4 time, and B-flat major. The first staff begins with a *mf* dynamic marking. The second staff includes a *mp* dynamic marking. The third staff concludes with a *mf* dynamic marking. The melody is primarily composed of eighth and quarter notes with various phrasing slurs and accents.

Wir wünschen Dir "Frohe Weihnacht"

(We Wish You A Merry Christmas)

Musical score for the piece "Wir wünschen Dir 'Frohe Weihnacht'". It consists of a single staff of music in bass clef, 3/4 time, and B-flat major. The piece begins with a *mf* dynamic marking. The melody is primarily composed of quarter and eighth notes.

Ihr Kinderlein, kommet

Musical score for the piece "Ihr Kinderlein, kommet". It consists of three staves of music in bass clef, 4/4 time, and B-flat major. The first staff begins with a *mf* dynamic marking. The second and third staves continue the melody. The score concludes with two fermatas on the final notes of the third staff.

Lasst uns froh und munter sein

Three staves of music in bass clef, 3/4 time, key of B-flat. The first staff starts with a *mf* dynamic. The second staff has a fermata over the first measure. The third staff ends with a *f* dynamic. A double bar line is present at the end of the third staff.

Schneeflöckchen, Weißbröckchen

Two staves of music in bass clef, 3/4 time, key of B-flat. The first staff starts with a *mp* dynamic. The second staff ends with a double bar line.

Ihr Hirten, erwacht!

Three staves of music in bass clef, 3/4 time, key of B-flat. The first staff starts with a *mf* dynamic and has a *mp* dynamic marking later. The second staff has a *mf* dynamic marking. The third staff starts with a *f* dynamic and ends with a double bar line.

Alle Jahre wieder

Two staves of musical notation in bass clef, 4/4 time, and B-flat major. The first staff begins with a *mf* dynamic marking. The music consists of quarter and eighth notes with various phrasings and slurs. The second staff concludes with a double bar line. Below the staves are two trapezoidal markings indicating dynamics or performance techniques.

O du fröhliche

Four staves of musical notation in bass clef, common time (C), and B-flat major. The first staff begins with a *mf* dynamic marking. The second staff features a key signature change to one sharp (F#) for a few measures. The third staff includes dynamic markings *p*, *mf*, and *f*. The fourth staff concludes with a double bar line. Similar to the first section, there are trapezoidal markings below the staves.

Freu' dich, o Welt

(Joy To The World)

Musical score for 'Freu' dich, o Welt' (Joy To The World). The score is written in bass clef, 4/4 time, and B-flat major. It consists of five staves of music. The first staff begins with a forte (*f*) dynamic. The music features a mix of quarter, eighth, and sixteenth notes, with some notes beamed together. A slur is present over the second and third staves. The piece concludes with a double bar line on the fifth staff.

Herbei, o ihr Gläubigen

(Adeste fideles)

Musical score for 'Herbei, o ihr Gläubigen' (Adeste fideles). The score is written in bass clef, 4/4 time, and B-flat major. It consists of four staves of music. The first staff begins with a mezzo-forte (*mf*) dynamic. The music features a mix of quarter, eighth, and sixteenth notes, with some notes beamed together. A crescendo hairpin is used in the third staff. The piece concludes with a double bar line on the fourth staff.

Es wird schon gleich dunkel

(Es wird scho glei dumpa)

Musical score for the first piece, consisting of four staves of bass clef notation in 3/4 time. The key signature has one flat (B-flat). The first staff begins with a dynamic marking of *mf*. The second and third staves continue the melodic line. The fourth staff concludes with dynamic markings of *mp* and *mf*, and a *rit.* (ritardando) marking above the final notes.

Maria durch ein' Dornwald ging

Musical score for the second piece, consisting of three staves of bass clef notation in common time (C). The key signature has one sharp (F#). The first staff begins with a dynamic marking of *mp*. The second and third staves continue the melodic line.

The First Nowell

Musical score for "The First Nowell" in bass clef, 3/4 time, B-flat major. The score consists of five staves. The first staff begins with a treble clef, a key signature of one flat, and a 3/4 time signature. The music starts with a whole rest, followed by a half rest, and then a series of eighth notes: G2, F2, E2, D2, C2, B1, A1, G1. The first measure of this eighth-note sequence is marked *mp*. The second staff continues the eighth-note sequence: F2, E2, D2, C2, B1, A1, G1, F2. The third staff continues: E2, D2, C2, B1, A1, G1, F2, E2. The fourth staff continues: D2, C2, B1, A1, G1, F2, E2, D2. The fifth staff concludes the piece with a whole note G1.

Still, still, still

Musical score for "Still, still, still" in bass clef, 4/4 time, B-flat major. The score consists of three staves. The first staff begins with a treble clef, a key signature of one flat, and a 4/4 time signature. The music starts with a whole note G2, followed by a whole note F2, a whole note E2, and a whole note D2. The first measure of this whole-note sequence is marked *mp*. The second staff continues with eighth notes: C2, B1, A1, G1, F2, E2, D2, C2. The third staff concludes the piece with a whole note G1.

Es kommt ein Schiff, geladen

Three staves of music in bass clef, 6/4 time signature, and B-flat major. The first staff begins with a rest followed by a series of notes: G2, F2, E2, D2, C2, B1, A1, G1. A dynamic marking *p* is placed below the first note. The second staff continues with notes: G1, F1, E1, D1, C1, B0, A0, G0. The third staff concludes with notes: G0, F0, E0, D0, C0, B-1, A-1, G-1, ending with a double bar line.

Morgen, Kinder, wird's was geben

Three staves of music in bass clef, common time (C), and B-flat major. The first staff has a rest followed by notes: G2, F2, E2, D2, C2, B1, A1, G1. A dynamic marking *mf* is placed below the first note. The second staff continues with notes: G1, F1, E1, D1, C1, B0, A0, G0. The third staff concludes with notes: G0, F0, E0, D0, C0, B-1, A-1, G-1, ending with a double bar line. A dynamic marking *f* is placed below the first note of the third staff.

Zu Bethlehem geboren

Three staves of music in bass clef, 4/4 time signature, and B-flat major. The first staff has a rest followed by notes: G2, F2, E2, D2, C2, B1, A1, G1. A dynamic marking *mf* is placed below the first note. The second staff continues with notes: G1, F1, E1, D1, C1, B0, A0, G0. The third staff concludes with notes: G0, F0, E0, D0, C0, B-1, A-1, G-1, ending with a double bar line.

Inmitten der Nacht

Musical score for 'Inmitten der Nacht' in bass clef, 3/4 time, key of B-flat major. The score consists of four staves. The first staff begins with a dynamic marking of *mf*. The second and third staves continue the melodic line. The fourth staff features a dynamic change to *p* for the first measure, followed by *mf* for the subsequent measures, and concludes with a double bar line.

Ein' große Freud verkünd ich euch

Musical score for 'Ein' große Freud verkünd ich euch' in bass clef, 2/4 time, key of B-flat major. The score consists of four staves. The first staff begins with a dynamic marking of *mf*. The second and third staves continue the melodic line. The fourth staff concludes the piece with a double bar line.

Es ist ein Ros' entsprungen

Three staves of music in bass clef, 4/4 time, key of B-flat major. The first staff begins with a *mf* dynamic. The second staff features a *mp* dynamic. The third staff concludes with a *f* dynamic. The music consists of quarter and eighth notes, with some rests and a final double bar line.

Il est né, le divin Enfant

Five staves of music in bass clef, common time (C), key of B-flat major. The first staff starts with a *mf* dynamic. The second staff has a *mp* dynamic. The third staff includes a *Fine* marking above the staff. The fourth and fifth staves continue the melodic line. The final staff ends with a double bar line and the instruction *D. C. al Fine*.

Am Weihnachtsbaum die Lichter brennen

Two staves of musical notation in bass clef, 3/4 time, and B-flat major. The first staff begins with a dynamic marking of *mf*. The melody consists of eighth and quarter notes with slurs.

Vom Himmel hoch, da komm' ich her

Three staves of musical notation in bass clef, 2/2 time, and B-flat major. The first staff begins with a dynamic marking of *mf*. The melody is primarily composed of half notes with slurs.

O Tannenbaum

Four staves of musical notation in bass clef, 3/4 time, and B-flat major. The first staff begins with a dynamic marking of *mf*. The melody features eighth and quarter notes with slurs.

Kommet, ihr Hirten

Three staves of music in bass clef, key of D major, and 3/4 time. The first staff begins with a *mp* dynamic. The second staff begins with a *mf* dynamic. The third staff contains a sequence of notes with dynamics *mp*, *mf*, and *f* indicated below the notes.

Vom Himmel hoch, o Englein kommt

Three staves of music in bass clef, key of B-flat major, and 6/8 time. The first staff begins with a *mp* dynamic and includes a *p* dynamic marking. The second staff begins with a *mp* dynamic and includes a *mf* dynamic marking. The third staff begins with a *f* dynamic marking.

Fröhliche Weihnacht überall

Musical score for 'Fröhliche Weihnacht überall' in bass clef, B-flat major, common time. The score consists of four staves. The first staff begins with a dynamic marking of *mf* (2. x *f*). The second staff has a dynamic marking of *f*. The third staff has a dynamic marking of *mp* and includes a double bar line with the word 'Fine' above it. The fourth staff ends with a double bar line and the instruction 'D. C. al Fine' to the right. A fermata is placed over the final note of the fourth staff.

Aba heidschi bumbeidschi

Musical score for 'Aba heidschi bumbeidschi' in bass clef, B-flat major, 3/4 time. The score consists of four staves. The first staff begins with a dynamic marking of *mf*. The fourth staff ends with a dynamic marking of *rit.* and a double bar line.

Deck the Halls

mf

f

Stille Nacht

p

mp

Süßer die Glocken nie klingen

mp

Musical score for the first piece, 'Süßer die Glocken nie klingen'. It consists of four staves of music in bass clef, 6/8 time signature, and B-flat major key. The first staff begins with a mezzo-piano (*mp*) dynamic marking. The music features a melodic line with eighth and sixteenth notes, often beamed together, and rests. The piece concludes with a fermata over the final note.

Tochter Zion

f

mf

f

Musical score for the second piece, 'Tochter Zion'. It consists of four staves of music in bass clef, common time (C), and B-flat major key. The first staff begins with a forte (*f*) dynamic marking. The music features a melodic line with eighth and sixteenth notes, often beamed together, and rests. The second staff includes a mezzo-forte (*mf*) dynamic marking. The third staff includes a forte (*f*) dynamic marking. The piece concludes with a fermata over the final note.

Hört ihr die Englein singen?

Musical score for 'Hört ihr die Englein singen?' in bass clef, 3/4 time, and B-flat major. The score consists of three staves. The first staff begins with a rest followed by a melodic line starting on G4, moving up to F5, then down to E4. The second staff continues the melody with dynamics *mp* and *mf*. The third staff concludes the piece with a *f* dynamic and a final whole note chord.

Go Tell It on the Mountains

Musical score for 'Go Tell It on the Mountains' in bass clef, common time, and B-flat major. The score consists of five staves. The first staff begins with a *mf* dynamic. The second staff continues the melody. The third staff includes a *Fine* marking. The fourth and fifth staves conclude the piece with a *D. C. al Fine* instruction.

Gloria in Excelsis Deo

(Les anges dans nos campagnes)



f



mp



f

